

**TK-VÆTKIT**

**TK-VÆTKIT**

*Veterinary  
Gastroscope System*



**TK VETKIT CO.,LTD.**

ADD:7F BLDG,NO.6TH PLANT,PINGXI 10TH RD,ZHUHAI,CHINA  
TEL:+86-0755-23761871

C-GU-202202-V1.1

## LED Light Source L-10

### Features

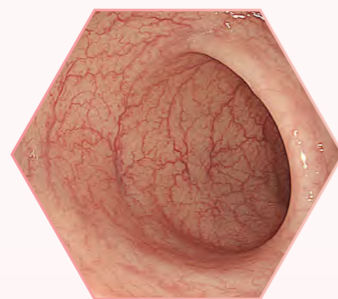
- High brightness LED, good color restoration and long operation life.
- Touch-screen control, friendly interactive interface.
- Brightness with 9 levels adjustment, suitable for a variety of scenes.
- All in one light source + water/air pump.



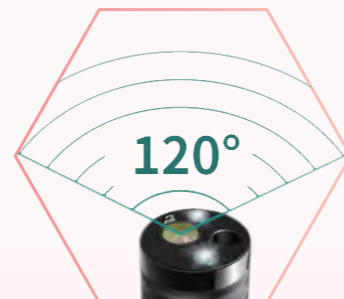
## Specification

Model	Power Voltage	Light	Air Pump Pressure	Diameter	Brightness	Air Pump
L-10	100-240V AC	LED	45Kpa-65Kpa	φ8.5mm	9 levels	3 levels

## Features



HD Image



Wide Angle



Angle Lock



Big Forceps Channel

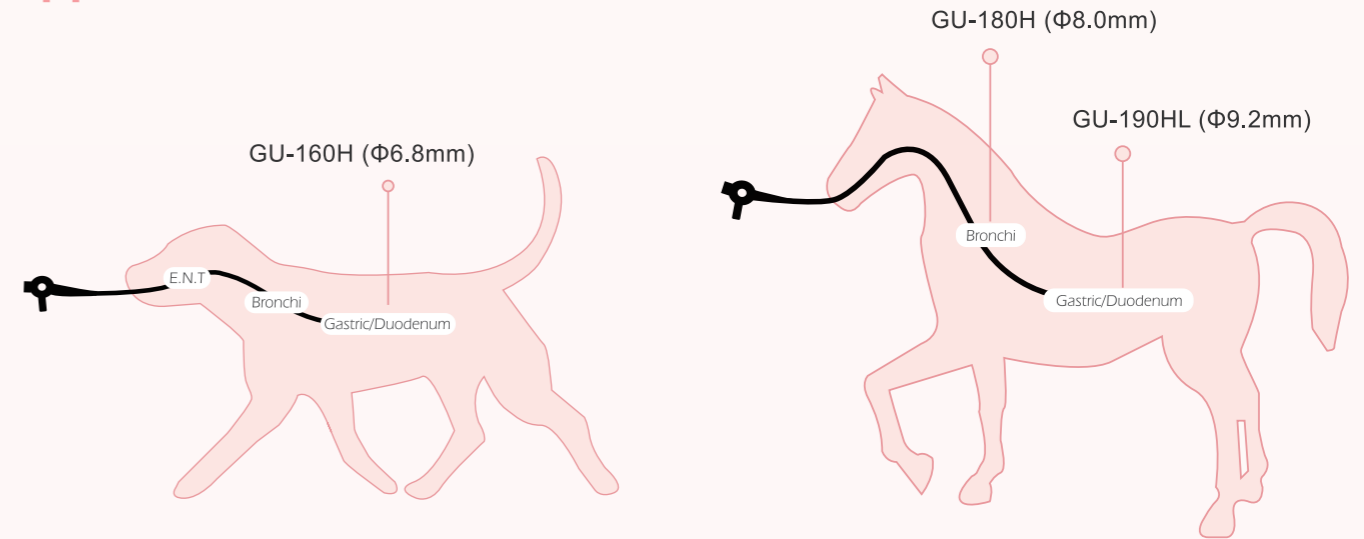
## Intelligent Image Processor D-1324



### Features

- 23.6 inch touch-screen image processor
- Full HD 1920×1080
- Medical record management system
- Support wire and wireless network

## Application



► Upper and lower GI tract work in companion animals (gastroscope and colonoscopy) and airways investigations in equine(upper airways scope)

► Ideal for numerous large animal applications, including gastroscopy, colonoscopy, esophagoscopy, tracheoscopy, hysteroscopy, rhinoscopy, pharyngoscopy and laryngoscopy.

## Specification

Model	Insertion Tube	Working Channel	Working Length	Range Of Bending		View Angle
GU-160H	6.8mm	2.2mm	1500mm	U210°, D130°	L100°, R100°	120°
GU-180H	8.0mm	2.2mm	1500mm	U210°, D130°	L100°, R100°	120°
GU-190H	9.2mm	2.8mm	1500mm	U210°, D130°	L100°, R100°	120°
GU-190HL	9.2mm	2.8mm	3000mm	U210°, D130°	L100°, R100°	120°