

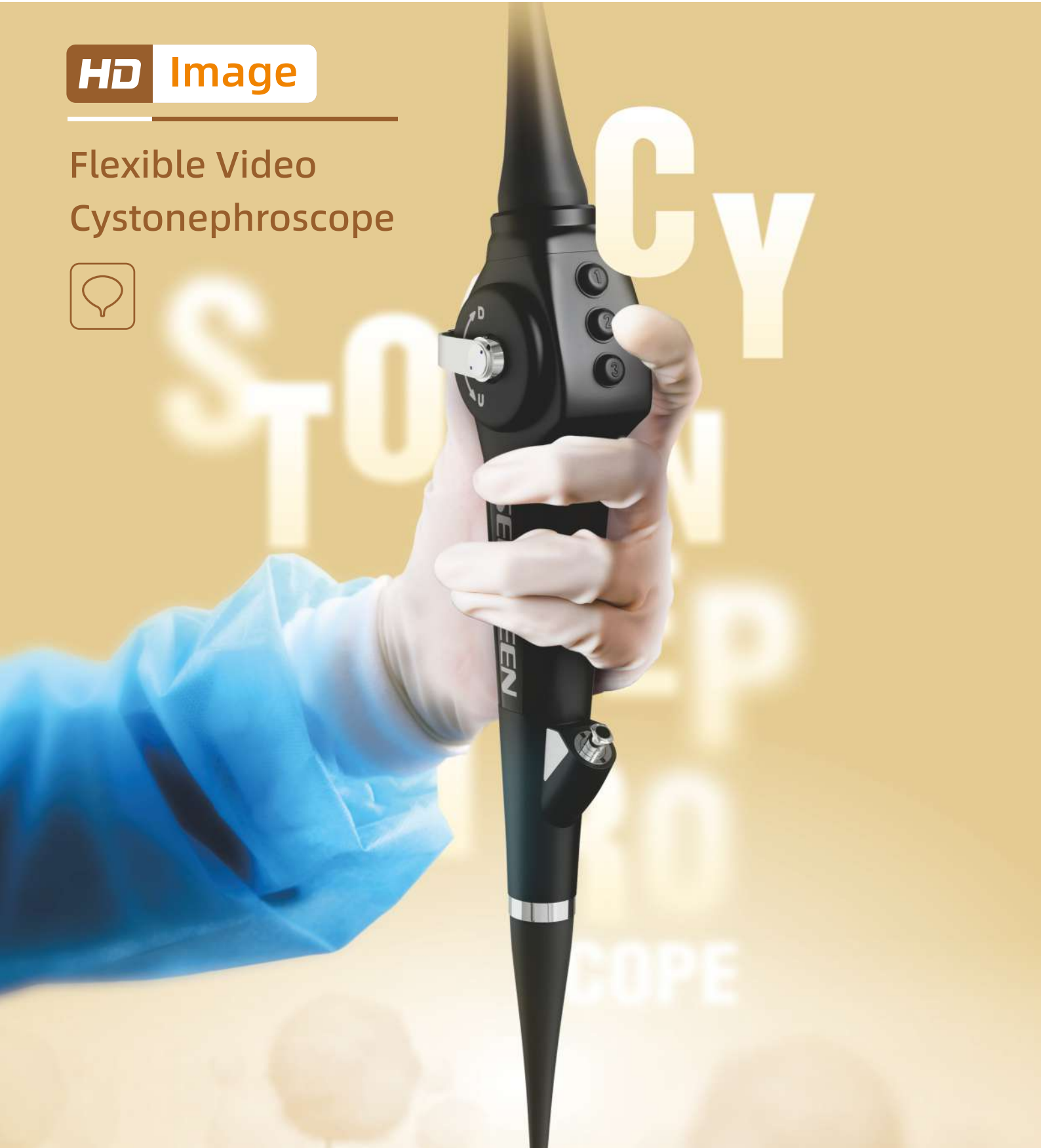
CE 0197

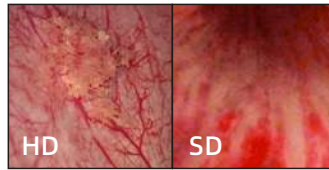


SEESHEEN

HD Image

Flexible Video
Cystonephroscope





HD Image

HD image gives more details of bladder.

Control Button

- ① Zoom
- ② Capture/Recording
- ③ Freeze



CMOS + LED Technology

Fiber-free design makes it more durable.

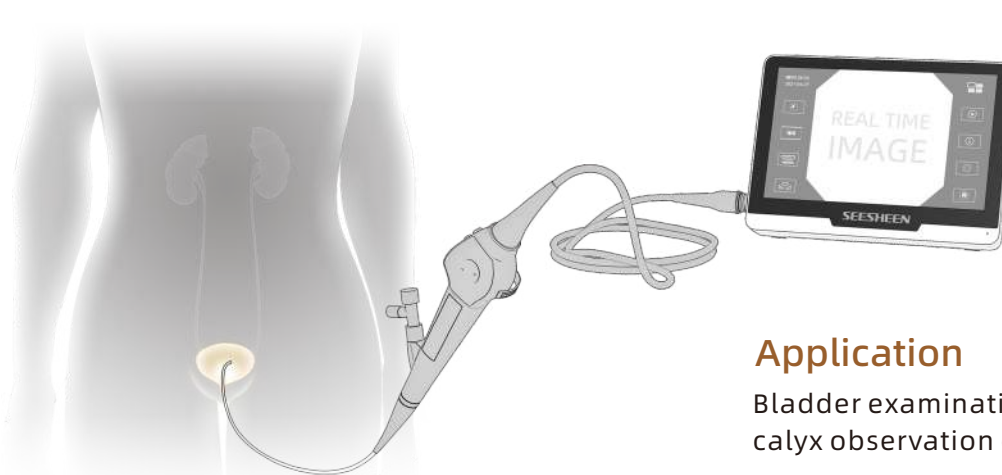


Insertion tube: 15.6Fr

Working channel: 6.6Fr

Portable

Equipped with image processor HV-3101
Support external monitor



Application

Bladder examination, therapy and kidney calyx observation during PCNL.

Model	Insertion Tube	Channel	Working Length	Bending (Up/Down)	Field of View	Depth of Field
CY-1356	15.6Fr	6.6Fr	380mm	210°/130°	120°	3-50mm