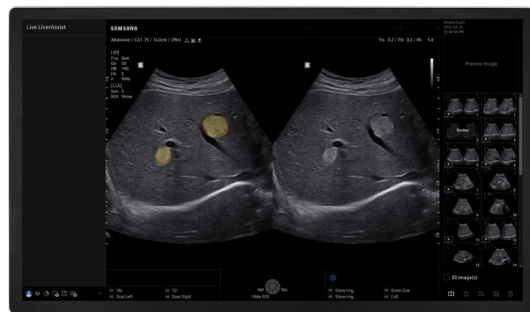


**Relentless Innovation**  
for your diagnostic confidence

**SAMSUNG**

# R20

Deep Insight,  
Confident Decision



Visit website

The R20 is more than just an ultrasound system – it is a comprehensive solution, meticulously designed to support healthcare professionals at every stage of patient care, from initial screening and diagnosis to intervention and beyond. With leading image quality, AI-enhanced clinical tools, effortless workflow, and intuitive, user-centric design, the R20 empowers healthcare professionals to focus on what matters most: delivering accurate and confident care. Additionally, the R20 offers tailored configurations that align with your specific operational needs. This advanced ultrasound system not only enhances the user experience but also sets a new standard of excellence in patient care, ensuring consistent quality from start to finish.

## Key highlights

### Leading-edge imaging for every care stage, all patients, everywhere

Equipped with a next-generation imaging engine, advanced GPU, and a wide OLED monitor, the R20 delivers outstanding performance and high-resolution images.

### Strengthens every decision with intelligent clinical tools

Empowered by AI solutions and advanced tools, the R20 enhances clinicians' confidence across various diagnostic scenarios.

### Effortless workflow, focus more on patients

Automated functions drastically reduce exam time, while an intuitive, radiology-optimized UX/UI improves daily workflow and operational ease.

### Designed for you, perfected for full-body imaging

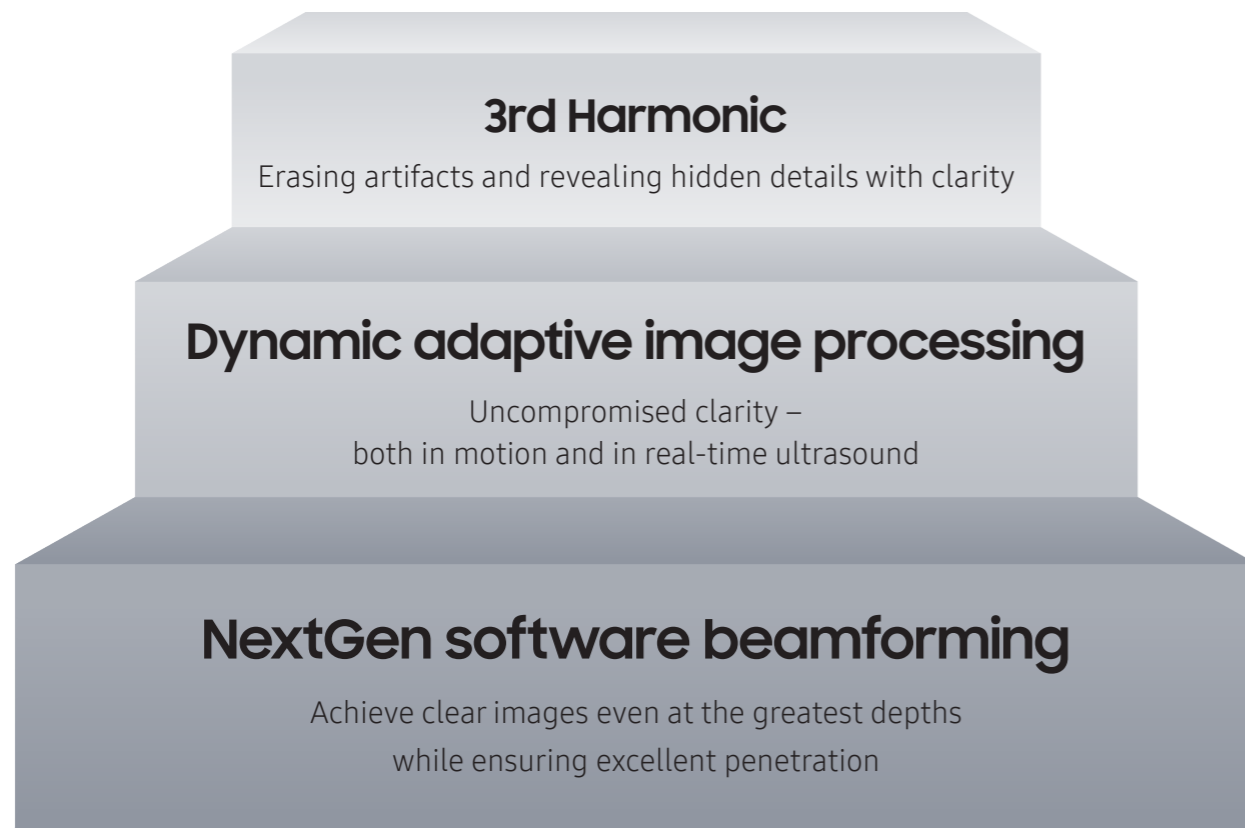
With its intuitive layout, user-friendly interface, and refined design, the R20 is built to support clinicians across all applications and body types — enabling flexible scanning with confidence and comfort.



# Leading-edge imaging for every care stage, all patients, everywhere

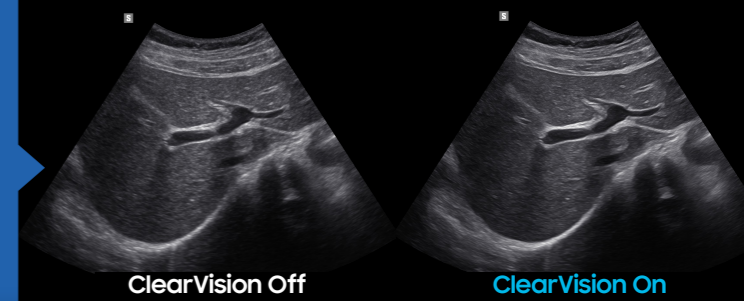
The R20 delivers exceptional image clarity—even in technically challenging cases and across diverse patient types. With optimized contrast, sharpness, and uniformity, it helps ensure reliable, high-resolution imaging for confident clinical decisions.

## Advancing core imaging to new frontiers



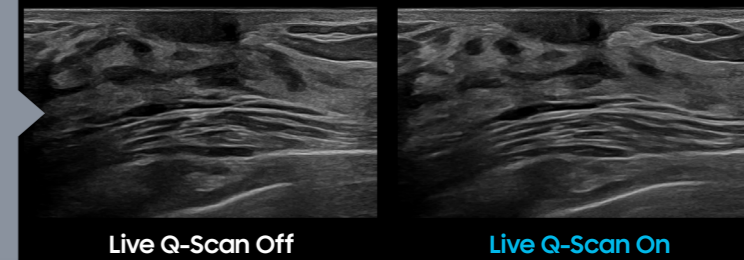
### Noise reduction with edge enhancement

**ClearVision** provides clear tissue boundaries using the noise reduction filter and generates sharp 2D images. It reduces halo artifact that occurs when the tissue contour is enhanced, and removes noises on the tissue boundaries.



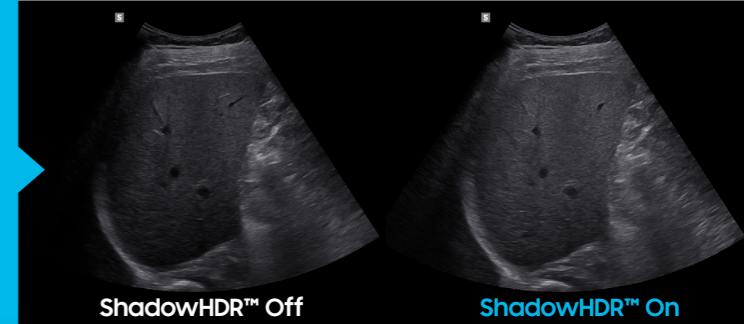
### Auto optimization of B-mode image in real-time

**Live Q-Scan** during the scan, the brightness and uniformity of the B-mode image are automatically adjusted in real time to provide optimal image quality for each organ and region, helping to improve diagnosis and workflow.



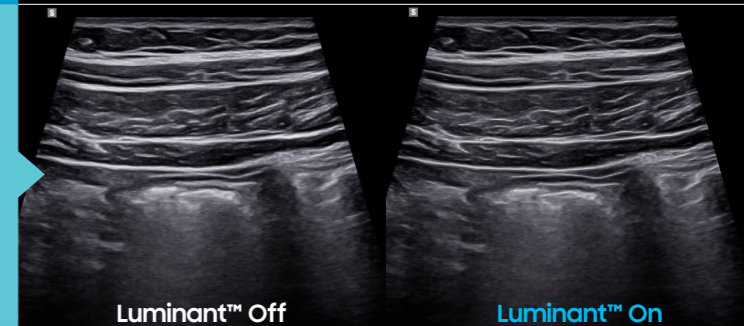
### Unparalleled shadow suppression

**ShadowHDR™** selectively applies high-frequency and low-frequency of the ultrasound to identify shadow areas such as intercostal space where attenuation occurs.



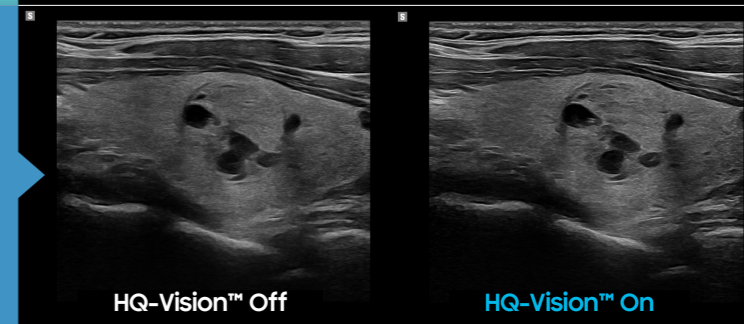
### 3D-like edge visualization for unmatched clarity

**Luminant™** is a function that visualizes the boundary of a 2D image in three dimensional-like to help understand the boundary of structures.



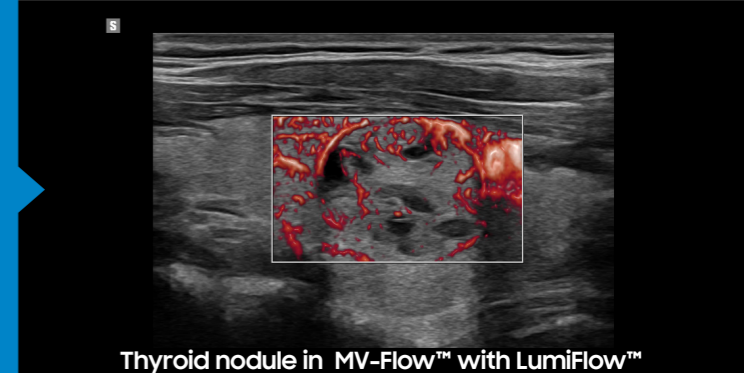
### Blurry areas cleaned up instantly

**HQ-Vision™** provides clear images by mitigating the characteristics of ultrasound images that are slightly blurred than the actual vision.



### Visualization of slow flow in microvascular structures

**MV-Flow™<sup>1</sup>** visualizes microcirculatory and slow blood flow to display the intensity of blood flow. It is suitable for observation of microcirculatory blood flow and volume of slow blood flow.

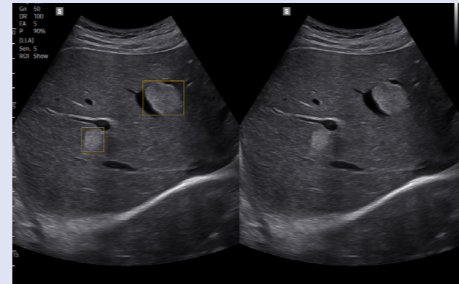


# Strengthens every decision with intelligent clinical tools

## Abdomen

### Real-time AI. Smart detection of liver regions of interest

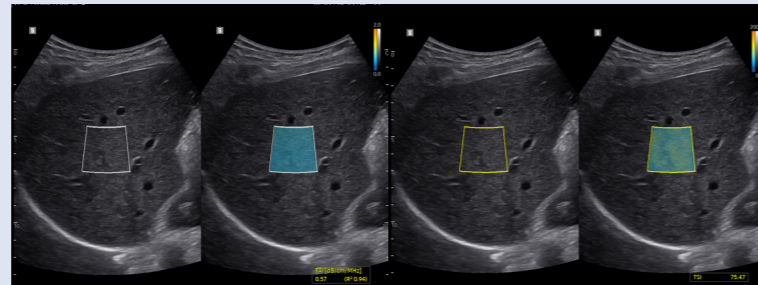
**Live LiverAssist™**<sup>1</sup>, a feature based on Deep Learning technology, detects interested areas in real-time during liver scanning and displays the location of lesions to assist healthcare professionals in diagnosis.



### Quantitative measurement of liver fat

**TAI™** (Tissue Attenuation Imaging) provides quantitative tissue attenuation measurement to assess steatotic liver changes.

**TSI™** (Tissue Scatter distribution Imaging) provides quantitative tissue scatter distribution measurement to assess steatotic liver changes.

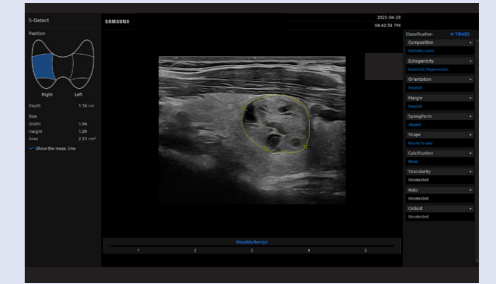


## Thyroid

### Precise thyroid assessment tool

**S-Detect™**<sup>1</sup> for thyroid, the feature, which analyzes selected lesions in the thyroid ultrasound study and shows the analysis data, provides standardized reporting based on the ATA, BTA, EU-TIRADS, K-TIRADS, and ACR TI-RADS guidelines; and helps diagnosis with the streamlined workflow

- . ATA: American Thyroid Association
- . BTA: British Thyroid Association
- . EU-TIRADS: European Thyroid Imaging Reporting and Data System
- . K-TIRADS: Korean Thyroid Imaging Reporting and Data System
- . ACR TI-RADS: American College of Radiology, Thyroid Imaging



## Breast

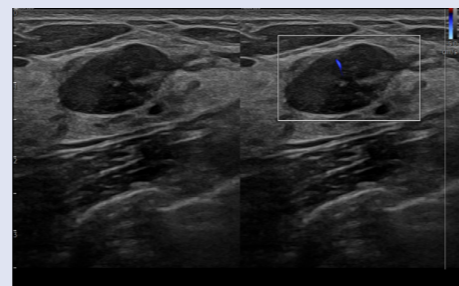
### Real-time AI. Smart detection of breast regions of interest

**Live BreastAssist™**<sup>1</sup>, a feature based on Deep Learning technology, detects interested areas in real-time during breast scanning and displays the location of lesions to assist healthcare professionals in diagnosis.

### Precise breast assessment tool

**S-Detect™**<sup>1</sup> for breast, the feature, which analyzes selected lesions in the breast ultrasound study and shows the analysis data, applies BI-RADS ATLAS\* (Breast Imaging-Reporting and Data System, Atlas) to provide standardized reporting; and helps diagnosis with the streamlined workflow.

\* It is a registered trademark of ACR and all rights reserved by ACR.



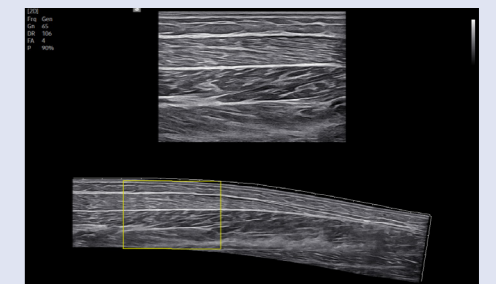
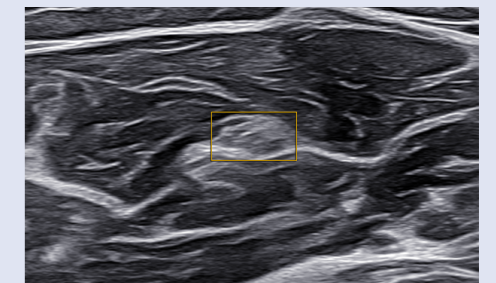
## Musculoskeletal

### Real-time AI. Smart detection of nerve regions of interest

**NerveTrack™**<sup>1</sup>, a feature based on Deep Learning technology, detects and provides information of the location of the nerve area in real-time during ultrasound scanning.

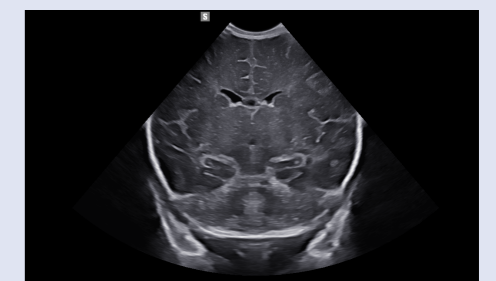
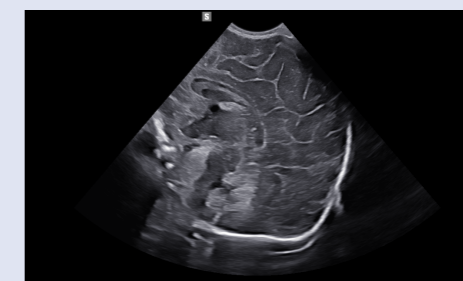
### Display in extended field-of-view

**Panoramic+** imaging displays as an extended field-of-view so users can examine wide areas that do not fit into one image as a single image. Panoramic+ imaging also supports angular scanning from linear transducer data acquisition.



## Pediatrics

Pediatrics dedicated, 3rd generation single crystal new transducer, CA2-13M

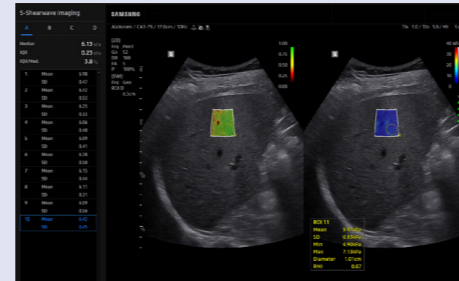


# Effortless workflow, focus more on patients

## Reliable quantification of tissue stiffness

**S-Shearwave Imaging™** allows for non-invasive assessment of the stiffness of tissue/lesions in various applications such as breast, liver and MSK. The color-coded elastogram, quantitative measurements, dual or single display option, and user-selectable ROI functions are especially useful for the accurate diagnosis of breast and liver diseases. Also, S-Shearwave Imaging™ enhances workflow (EzSWI™) by recommending elastic imaging frames and ROI locations during shear wave imaging.

\* EzSWI™ reduces keystrokes by approximately 70% compared to manual input.



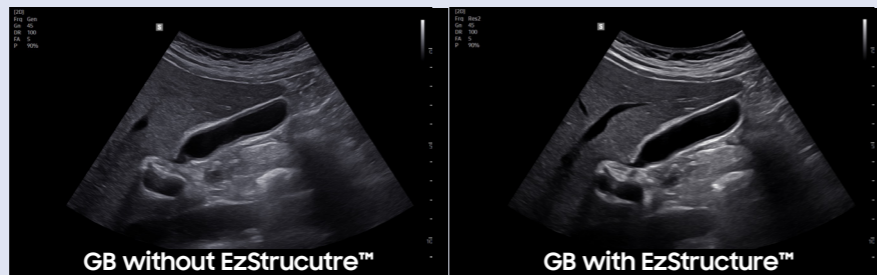
## Ultrasound made personal with your user account

**MyTune™** offers a customized user experience, including user environment settings and individual system settings, supporting to maximize ease of use.



## One-button solution for optimal 2D image settings

**EzStructure™** quickly provides optimal 2D images of the region of interest by simply clicking one button.



## Predefined protocols ensure steps are followed consistently

**EzExam+™** enables you to build or use a predefined protocol, and assign protocols for examinations that are regularly performed in the hospital in order to reduce the number of steps that you have to go through. For diagnosis, in particular, you can arrange the examination order according to the application using the touchscreen, and automatically apply the BodyMarker, Annotation, Measurement, etc.

## Customization of frequently used functions

**Touch Customization**, a customizable touchscreen interface that allows the user to select a layout for each mode, and the users can freely place necessary functions to make up the layout. Users can keep focusing on the patient instead of the system.

## One-button access to preset and transducer combinations

With one touch, the user can select the most common transducer and preset combinations. **QuickPreset** increases efficiency to make a full day of scanning simple and easy.

Equipped with AI-powered automation, the R20 significantly enhances workflow speed and clinical efficiency. By minimizing keystrokes and delivering deep insights at the touch of a button, it allows clinicians to spend less time on the system — and more time focused on patient care.

## Tailored precision. Automated measurement tool

**AbdomenAssist™**, a feature based on Deep Learning technology, measures the size of the interested organ, thereby reducing user variability and simplifying workflow.

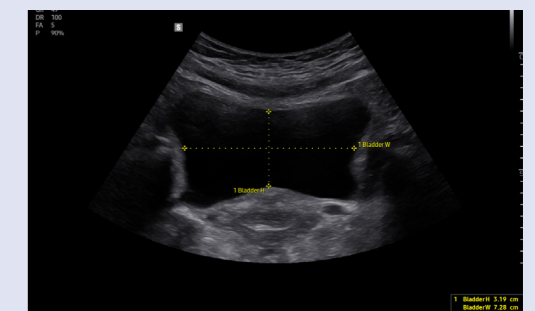
\* Target : Kidney, Spleen

\* Reduced keystrokes by approximately 33% compared to manual input.



**BladderAssist™**, a feature based on Deep Learning technology, measures the size of the bladder, thereby reducing user variability and simplifying workflow.

\* Reduced keystrokes by approximately 50% compared to manual input.



**ProstateAssist™**, a feature based on Deep Learning technology, measures the size of the prostate, thereby reducing user variability and simplifying workflow.

\* Reduced keystrokes by approximately 50% compared to manual input.

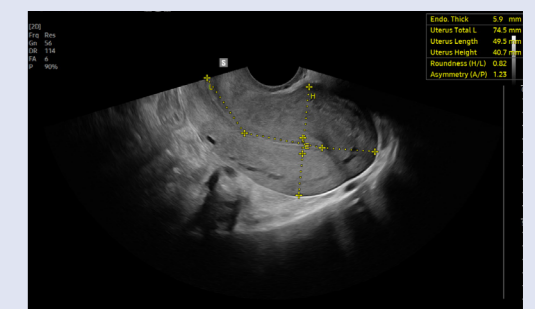


**BowelAssist™**, a feature based on Deep Learning technology, measures the thickness of the bowel in real-time during bowel scanning, thereby reducing user variability and simplifying workflow.

\* Reduced keystrokes by approximately 80% compared to manual input.

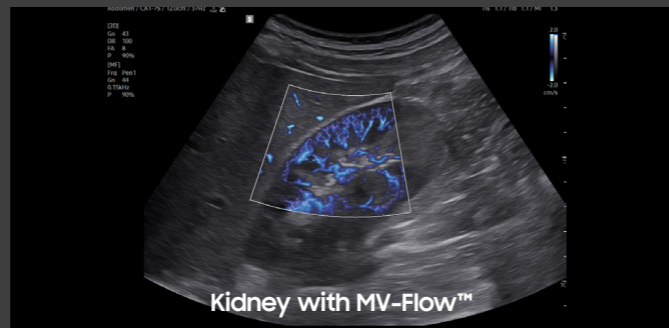
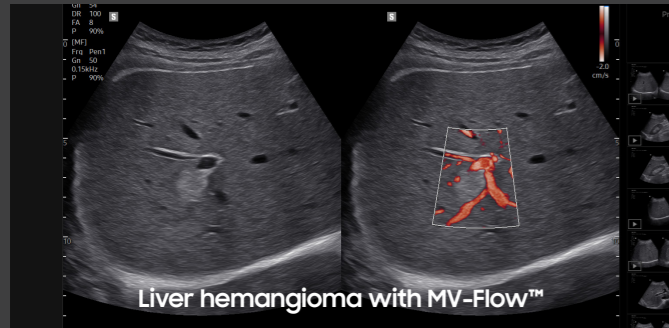


**UterineAssist™**, a feature based on Deep Learning technology, automatically measures the size and shape of the uterus, which helps in finding signs of uterine-related abnormalities, and also reduces scan time.

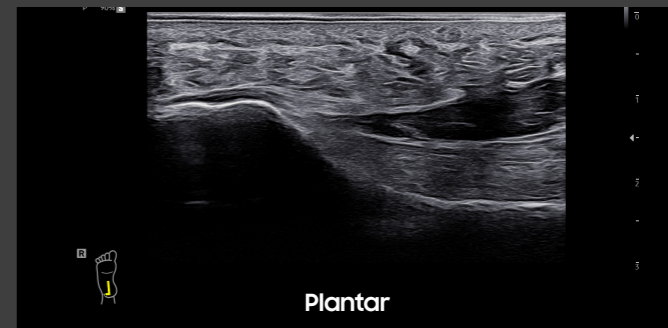
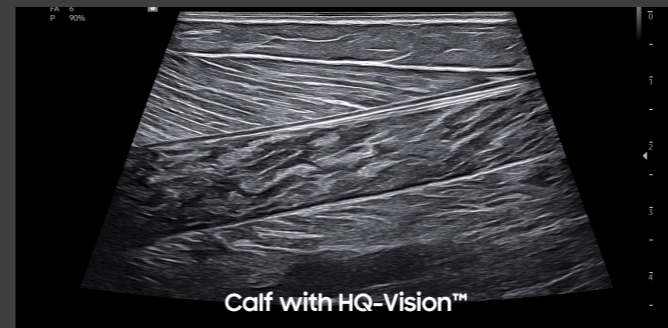
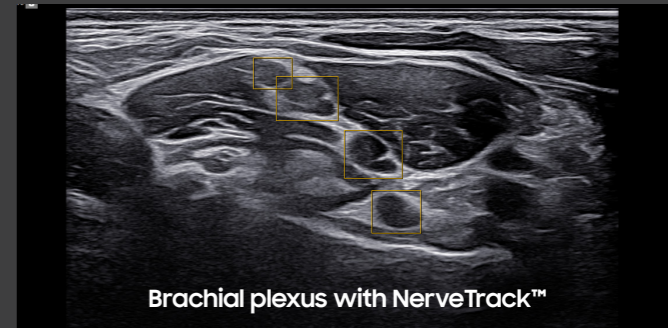
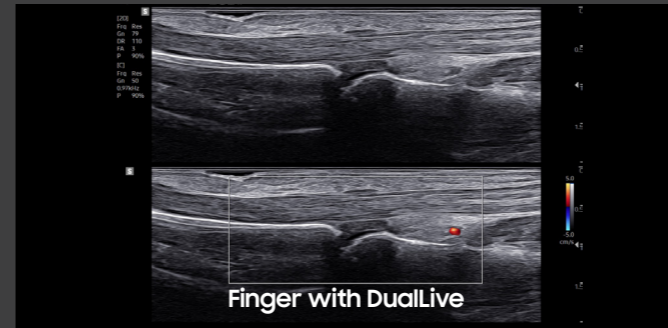


# Striking images for confidence

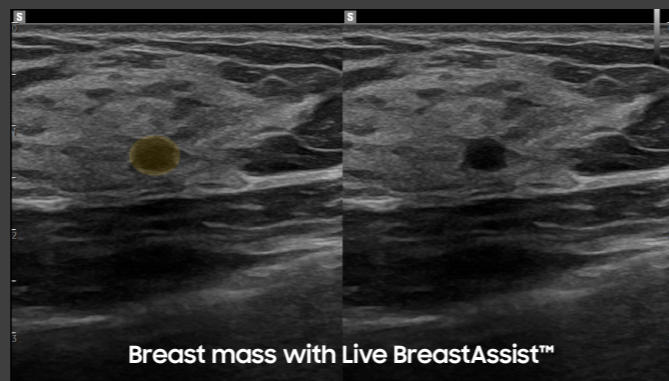
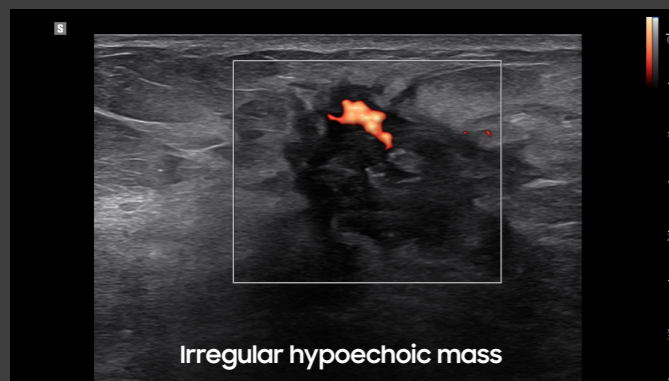
## Abdomen



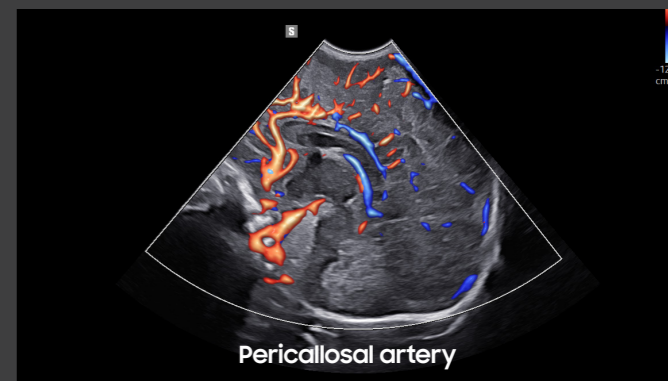
## Musculoskeletal



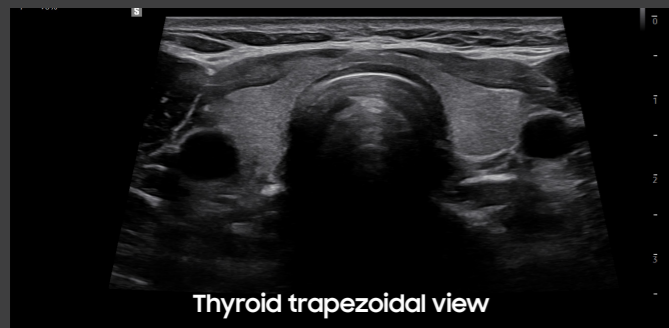
## Breast



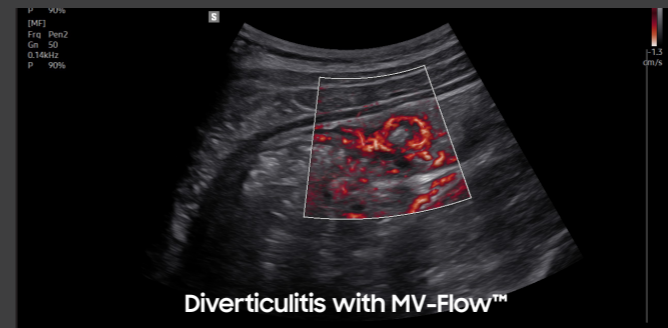
## Pediatrics



## Thyroid



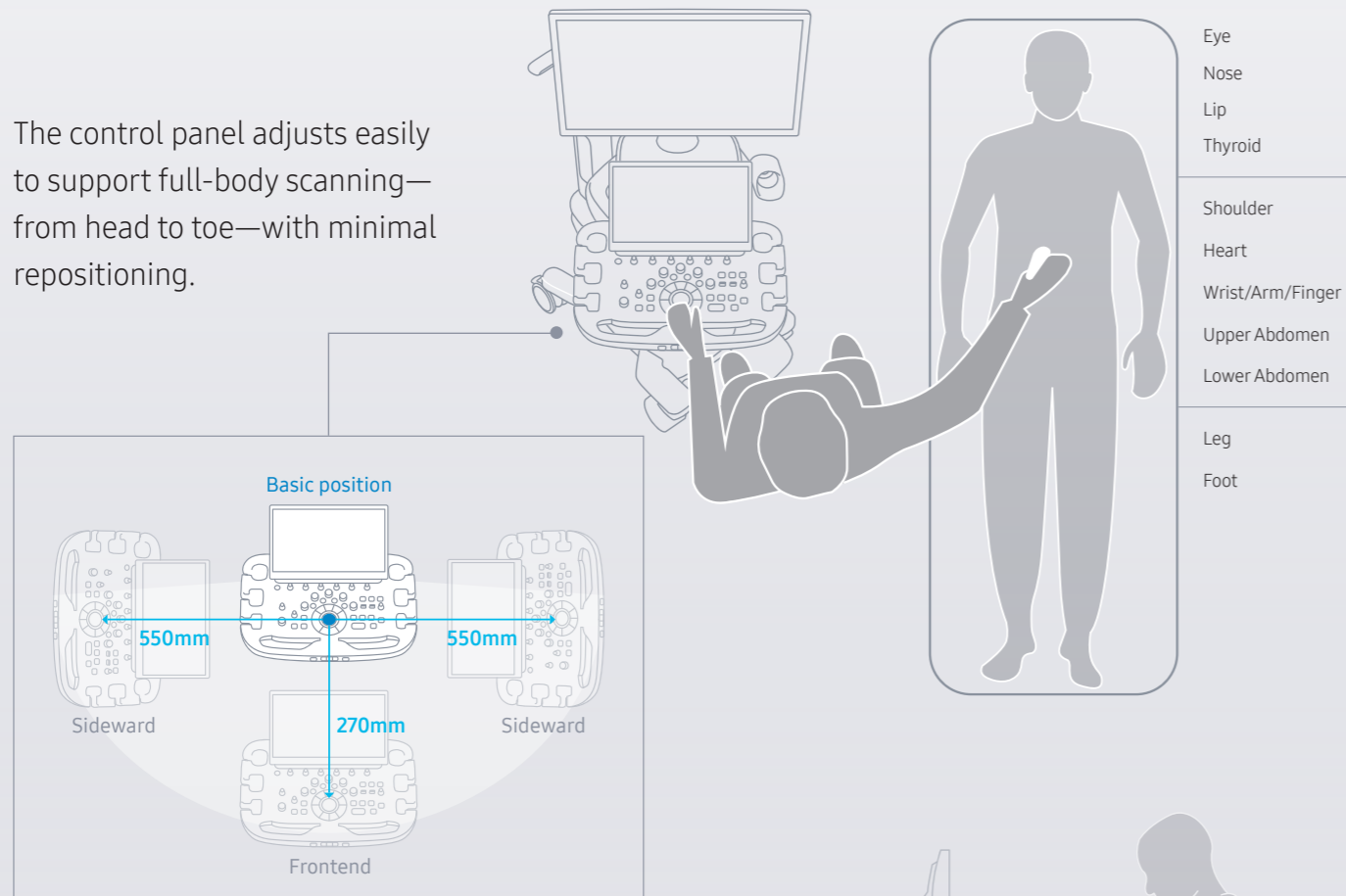
## Bowel



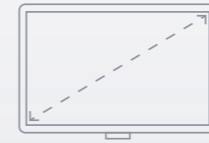
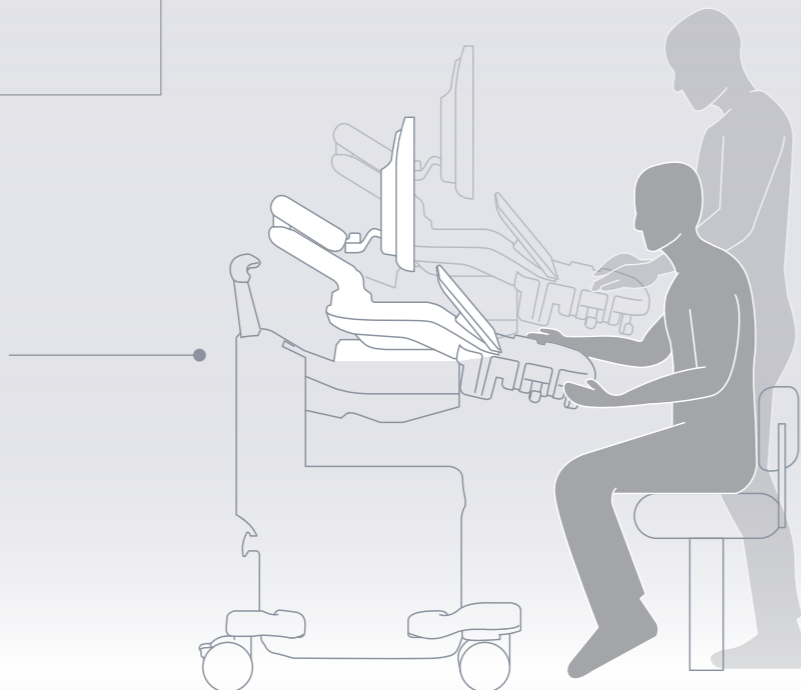
# Designed for you, perfected for full-body imaging

Every curve, every control—crafted with clinicians in mind. The R20 combines elegant design with intuitive usability, offering full-body coverage and seamless maneuverability. Because great design isn't just about how it looks, but how effortlessly it works for you.

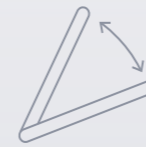
The control panel adjusts easily to support full-body scanning—from head to toe—with minimal repositioning.



Easily adjustable height range enables comfortable ultrasound operation while standing or sitting.



Wider view, true black color, deeper contrast with 27" OLED monitor



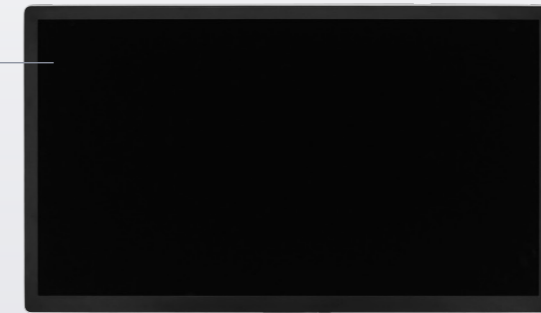
Tilts to your ideal angle while minimizing glare with the 15.6" touchscreen



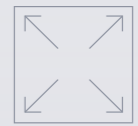
One-touch system lock/unlock, no need for individual wheel locking



The emotional LED lighting aids transducer mounting in dim settings.



The new gel warmer prevents collisions and can be mounted on either side.



Spacious compartments for trays, printers, and tools



Foot-operated rear caster lock



# Broad diagnostic coverage with versatile transducer support

## Linear Array Transducers



Abdomen, MSK, OB, Pediatric, Small Parts, Thoracic, Vascular



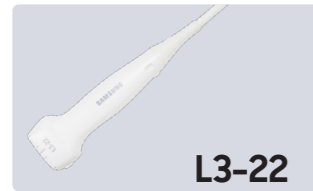
Abdomen, MSK, Pediatric, Small Parts, Vascular



Abdomen, MSK, Pediatric, Small Parts, Vascular



Abdomen, MSK, Pediatric, Small Parts, Vascular, OB, Thoracic



MSK, Pediatric, Small Parts, Vascular



Intraoperative, MSK, Pediatric, Small Parts, Vascular

## Curved Array Transducers



Abdomen, GYN, MSK, OB, Pediatric, Thoracic, Urology, Vascular



Abdomen, GYN, MSK, OB, Pediatric, Thoracic, Urology, Vascular  
\* Sensor implemented

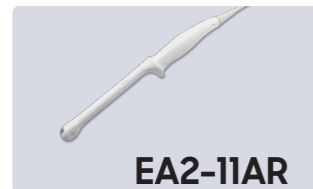


Abdomen, GYN, MSK, OB, Pediatric, Thoracic, Urology, Vascular

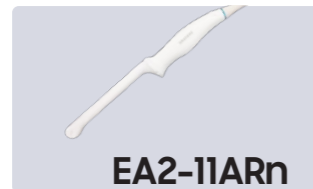


Abdomen, Pediatric, TCD, Vascular

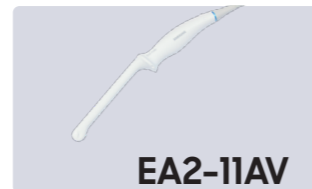
## Endocavity Transducers



GYN, OB, Urology



GYN, OB, Urology  
\* Sensor implemented



GYN, OB, Urology



GYN, OB, Urology

## Volume Transducers



Abdomen, GYN, OB, Urology



GYN, OB, Urology

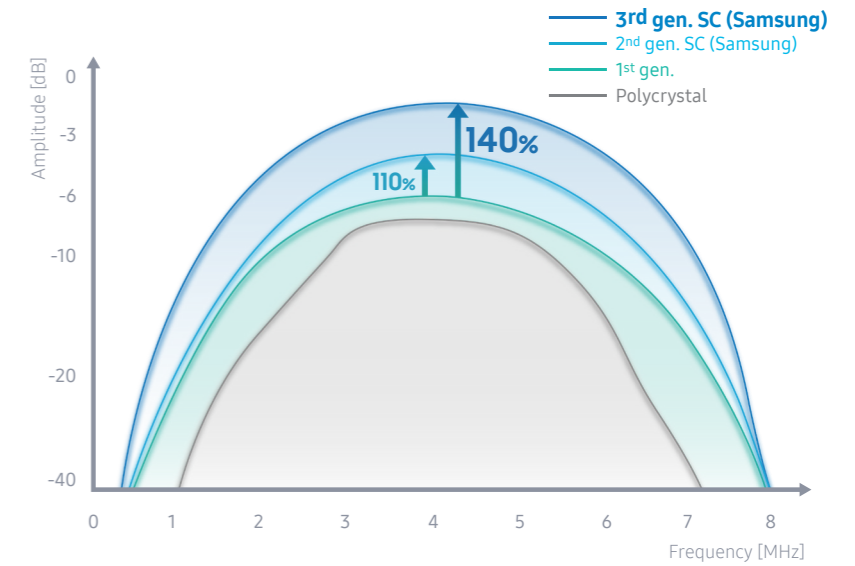


Abdomen, Cardiac, Pediatric, TCD, Thoracic, Vascular

## Phased Array Transducer

# Applied 3rd generation single crystal transducer<sup>2</sup>

Deeper penetration  
Enhanced spatial resolution



## Sustainable by design

**50%**  
Recycled resin  
on system  
body



Eco-conscious  
paper packaging



Energy  
saving  
features

- \* Real-time power consumption dashboard
- \* Auto on/off control & usage alerts
- \* Battery life optimization mode

## Integrated IT solutions for ultrasound ecosystems

### Real-time image sharing solution

SonoSync™ is a real-time ultrasound live-streaming solution with remote controllability from a smart device. The remote control gives access of the control panel and touch screen from a smart device, which enables care guide and training between the healthcare professionals. In addition, voice chatting, text chatting, video conference, and real-time marking are provided for efficient communication.

\* SonoSync™ is a function for image sharing, not for diagnosis.

### Centralized management system

S-Hub is a solution for comprehensive ultrasound system management, enhancing the operational efficiency of sonographers, Biomed/service engineers, and hospital administrators. Sonographers can save time by reducing repetitive tasks, engineers no longer require manual data backup one by one, and hospital staff can obtain real-time asset status monitoring via the dashboard.

# Samsung healthcare cybersecurity

To address the emerging need for cybersecurity, Samsung provides a solution to support our customers by offering the tools to protect against cyberthreats that may compromise invaluable patient data and ultimately degrade the quality of care. Samsung's Cybersecurity Solution strives to abide by the CIA triad (Confidentiality, Integrity, and Availability) and takes a comprehensive approach to providing impeccable protection with the following pillars:

## Intrusion prevention, Access control, and Data protection



Intrusion prevention



Access control



Data protection



Learn more

## theSUITE Samsung Ultrasound Institute of Technology and Education

Learn without limits!  
Explore our diverse ultrasound training and educational contents tailored just for you.



Visit theSUITE

Samsung Medison, an affiliate of Samsung Electronics, is a global medical company founded in 1985. With a mission to bring health and well-being to people's lives, the company manufactures diagnostic ultrasound systems around the world across various medical fields. Samsung Medison has commercialized the Live 3D technology in 2001 and since being part of Samsung Electronics in 2011, it is integrating IT, image processing, semiconductor and communication technologies into ultrasound devices for efficient and confident diagnosis.

- \* This product, features, options, and transducers may not be commercially available in some countries.
- \* Sales and shipments are effective only after the approval by the regulatory affairs.  
Please contact your local sales representative for further details.
- \* This product is a medical device, please read the user manual carefully before use.
- \* S-View Transducer™ is the name of Samsung's advanced transducer technology.

1. Optional feature which may require additional purchase.
2. The system transmission voltage may increase by up to 40%, potentially resulting in a 40% improvement in signal-to-noise ratio (SNR). However, please be aware that this improvement may not always be attainable due to limitations such as system temperature variations, output levels, or other system factors.

## SAMSUNG MEDISON CO., LTD.

© 2025 Samsung Medison All Rights Reserved.  
Samsung Medison reserves the right to modify the design, packaging, specifications, and features shown herein, without prior notice or obligation.

